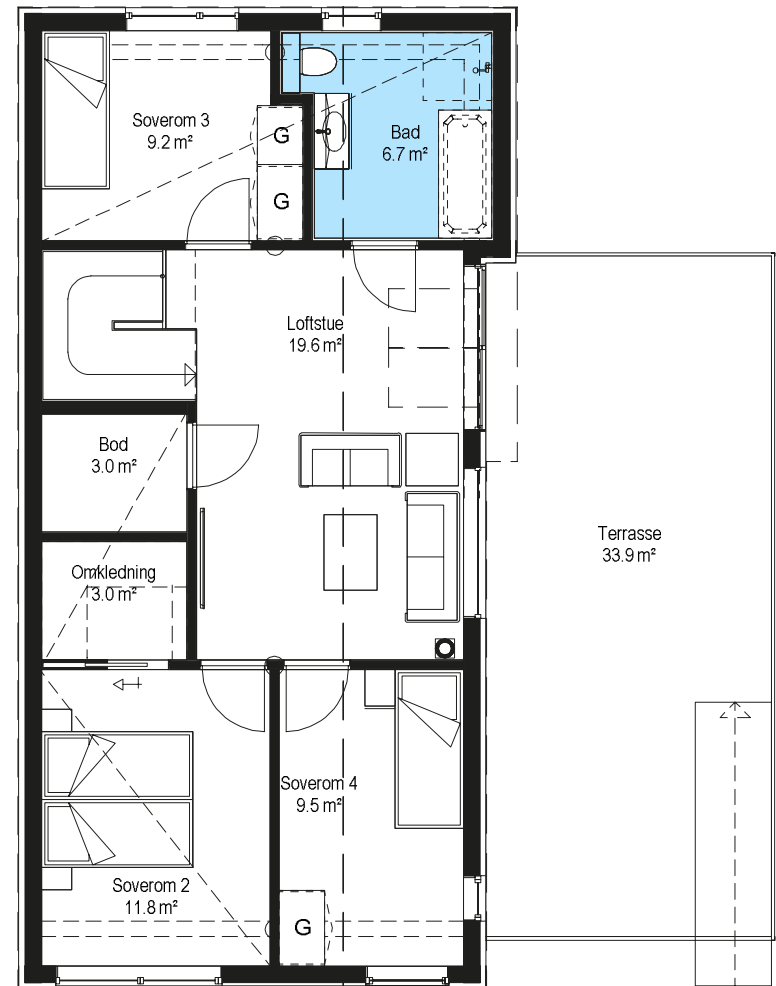


1.ETASJE



2.ETASJE

Bruksareal (BRA)

1. etasje bolig 1= 63,5m²

2. etasje bolig 1= 70,2m²

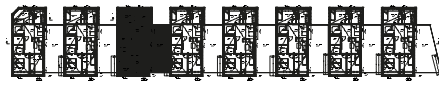
Sportsbod= 7,6m²

Carport= 24,8m²

P-rom = 130,0 m²

I tillegg lagringsplass på loftet
hvor det er horisontal himling

Total BRA (bolig + bod/carport)= 166,1m²



Eskerhagen 51