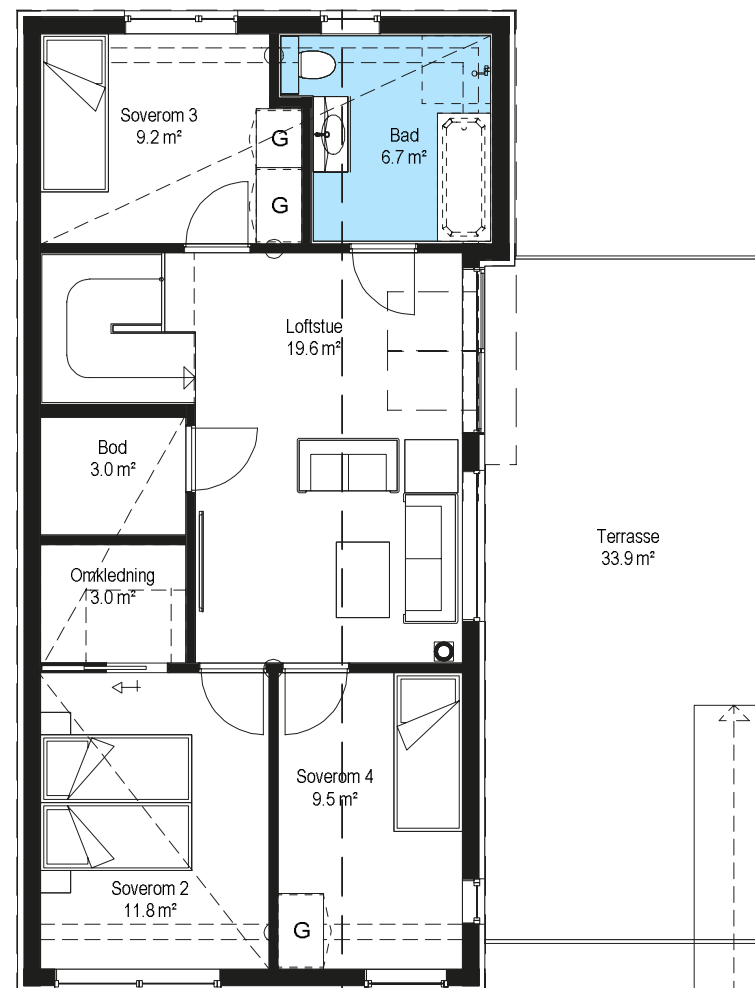
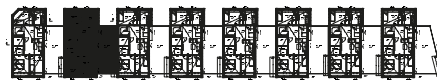


1.ETASJE



2.ETASJE



## Eskerhagen 53

### Bruksareal (BRA)

1. etasje bolig 1= 63,5m<sup>2</sup>

2. etasje bolig 1= 70,2m<sup>2</sup>

Sportsbod= 7,6m<sup>2</sup>

Carport= 24,8m<sup>2</sup>

P-rom = 130,0 m<sup>2</sup>

I tillegg lagringsplass på loftet  
hvor det er horisontal himling

Total BRA (bolig + bod/carport)= 166,1m<sup>2</sup>